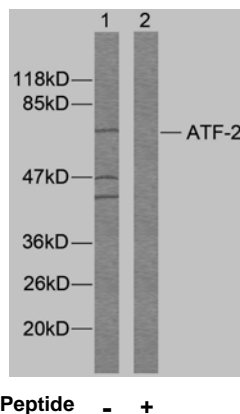


## Rabbit anti ATF-2 (Ab-112 or 94)

- Catalog Number:** AP21033  
**Amount:** 100µl (For 10 Western Blotting)  
**Form of Antibody:** Rabbit IgG in phosphate buffered saline (without Mg<sup>2+</sup> and Ca<sup>2+</sup>), pH 7.4, 150mM NaCl, 0.02% sodium azide and 50% glycerol.  
**Storage/Stability:** Store at -20°C/1 year  
**Immunogen:** The antiserum was produced against synthesized non-phosphopeptide derived from human ATF-2 around the phosphorylation site of serine 112 or 94 (D-L-S<sup>P</sup>-P-L).  
**Purification:** The antibody was affinity-purified from rabbit antiserum by affinity-chromatography using epitope-specific immunogen.  
**Specificity/Sensitivity:** ATF-2 (Ab-112 or 94) antibody detects endogenous levels of total ATF-2 protein.  
**Reactivity:** Human, Mouse, Rat  
**Applications:** WB: 1:1000  
**Swiss-Prot No. :** P15336  
**References:** Beausoleil S A, et al. (2004) Proc Natl Acad Sci U S A. 101(33): 12130-12135.  
Abdel-Hafiz H A, et al. (1992) Mol Endocrinol. 6: 2079-2089.  
Gupta S, et al. (1995) Science. 267: 389-393.  
Van Dam H, et al. (1995) EMBO J. 14(8): 1798-1811.  
Livingstone C, et al. (1995) EMBO J. 14: 1785-1797.



Western blot analysis of extracts from MDA-MB-435 cells using ATF-2 (Ab-112 or 94) antibody (AP21033).

**For Research Use Only**

Contact & Ordering Information: Angio-Proteomie, 11 Park Drive, Suite 12, Boston, MA 02215, USA. Fax: (480) 247-4337, [angioproteomie@gmail.com](mailto:angioproteomie@gmail.com)